





Introduction

Amenities

Specification

Floor Plan

Gallery

Location

Amenities

- Telephone & cable connection point. PowerPoint in Kit and bathroom.
- High quality granite kitchen platform with S.S. Sink.
- T.W / Ply door frames with flush door & aluminum fittings.
- Main door with brass fittings externally.
- Marble door frames for W/C & bathroom.
- Bath-room with antiskid flooring & glazed dado up to lintel level.
- All internal plumbing concealed & ext. open C.I/PVC pipes & fittings.
- Provision of shower, hot & cold water mixer & branded sanitary ware.
- Provision of exhaust fan in kitchen & bathroom.



Introduction

Amenities

Specification

Floor Plan

Gallery

Location

Specification

- R.C.C. framed structure.
- External & internal wall 6" thick B.B./ block Masonry.
- All internal walls neeru finish plaster and external walls in sand faced plaster.
- Porcelain tile flooring with 3" skirting.
- Concealed electrification as per requirement @3.5 pts in each room.
- Internal walls are in oil bond distemper of approved shades.
- External walls with cement paint. Oil paint for doors and grills.
- Three track powder coated aluminium sliding windows with grill.
- Wash hand basin with mirror.
- Adequate parking space inside and outside the building.
- Attractive and lavish main foyer / lobby in marble/ kotah.
- Treads and landings in Kota flooring.
- Lift of adequate capacity.
- Pump with automatic water level controller for U.G & O.H tank.
- Water tap for parking & vehicle washing & for gardening. in addition to that the bore well is provided.
- Additional toilet block in parking area for security & drivers.
- Decorative compound wall for total plot & heavy steel entrance gate.



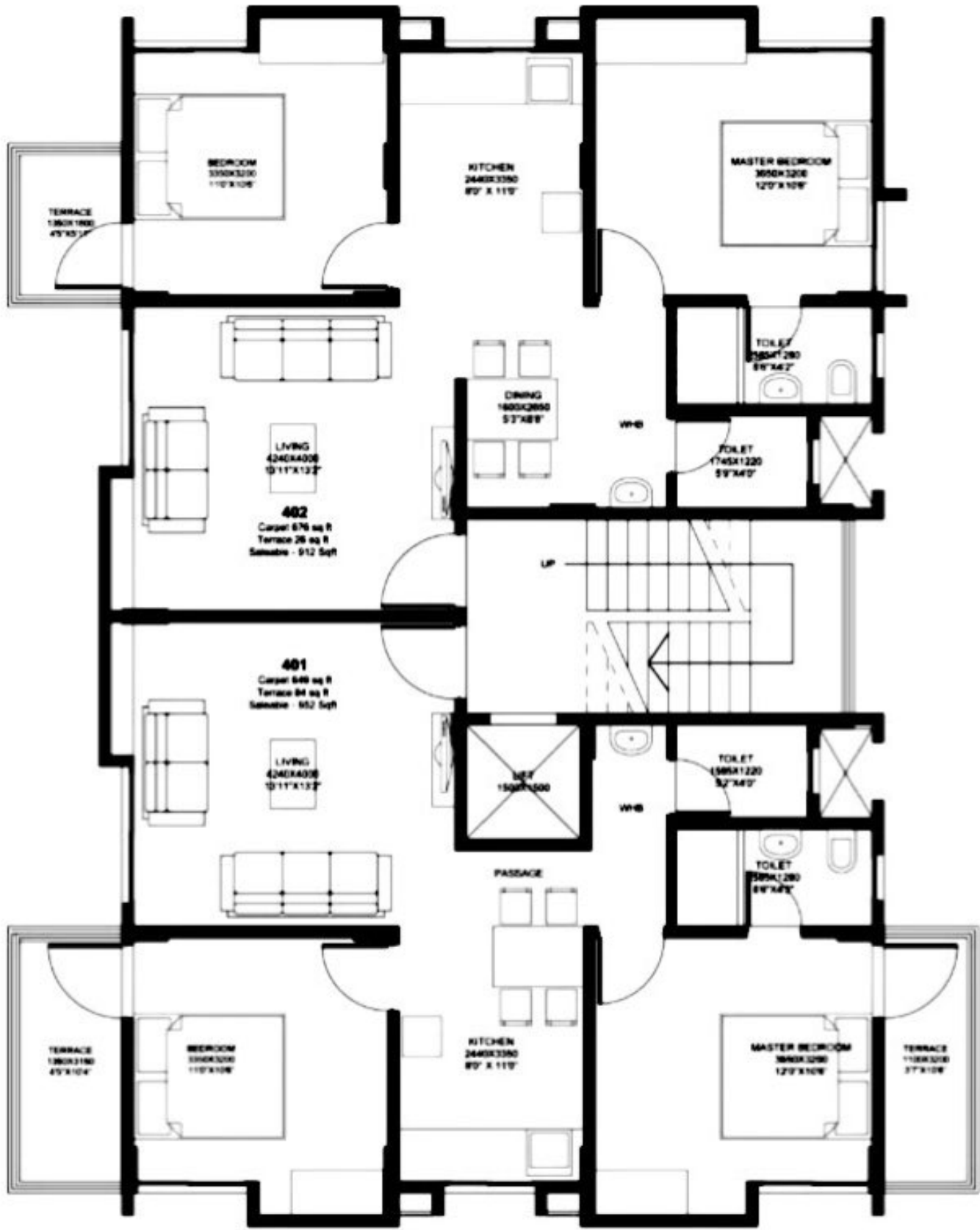
FIRST FLOOR PLAN

APARTMENT COMPLEX AT PLOT NO 7, UNDRU



THIRD FLOOR PLAN

APARTMENT COMPLEX AT PLUS NO 7, UNDER



FOURTH FLOOR PLAN
APARTMENT COMPLEX AT PL 67, NO 7, UNDR